



Turbo NAS

Troubleshooting Guide

©Copyright 2011. QNAP Systems, Inc. All Rights Reserved.

This guide provides the information you may need to troubleshoot the possible hardware and software issues of QNAP Turbo NAS products. The information contained herein applies to Turbo NAS models running firmware version 3.0.0 or later.

Legal Notices

All the features, functionality, and other product specifications are subject to change without prior notice or obligation. Information contained herein is subject to change without notice.

QNAP and the QNAP logo are trademarks of QNAP Systems, Inc. All other brands and product names referred to are trademarks of their respective holders.

Further, the ® or ™ symbols are not used in the text.

DISCLAIMER

In no event shall the liability of QNAP Systems, Inc. (QNAP) exceed the price paid for the product from direct, indirect, special, incidental, or consequential software, or its documentation. QNAP makes no warranty or representation, expressed, implied, or statutory, with respect to its products or the contents or use of this documentation and all accompanying software, and specifically disclaims its quality, performance, merchantability, or fitness for any particular purpose. QNAP reserves the right to revise or update its products, software, or documentation without obligation to notify any individual or entity.

Back up your system periodically to avoid any potential data loss. QNAP disclaims any responsibility of all sorts of data loss or recovery.

Should you return any components of the NAS package for refund or maintenance, make sure they are carefully packed for shipping. Any form of damages due to improper packaging will not be compensated.

Regulatory Notice



This equipment has been tested and found to comply with the limits for a Class B digital device, pursuant to Part 15 of FCC Rules. These limits are designed to provide reasonable protection against harmful interference in a residential installation. This equipment generates, uses, and can radiate radio frequency energy and, if not installed and used in accordance with the instructions, may cause harmful interference to radio communications. However, there is no guarantee that interference will not occur in particular installation. If this equipment does cause harmful interference to radio or television reception, which can be determined by turning the equipment off and on, the user is encouraged to try to correct the interference by one or more of the following measures:

- Reorient or relocate the receiving antenna.
- Increase the separation between the equipment and receiver.
- Connect the equipment into an outlet on a circuit different from that to which the receiver is connected.
- Consult the dealer or an experienced radio/television technician for help.

The changes or modifications not expressly approved by the party responsible for compliance could void the user's authority to operate the equipment.

Shielded interface cables, if any, must be used in order to comply with the emission limits.



Class B only.

Table of Contents

Table of Contents	4
1. General Information	5
2. Safety Information and Precautions	6
3. Troubleshoot Hardware Issues.....	7
4. Chassis Replacement.....	8
5. Troubleshoot Hard Disk Drive Issues.....	9
6. Troubleshoot Power Supply Issues.....	11
7. Troubleshoot Software Issues	12
8. Firmware Recovery Guide for ARM-based NAS Models	14
9. Firmware Recovery Guide for Intel x86-based NAS Models	28
Technical Support	36
GNU GENERAL PUBLIC LICENSE	37

1. General Information

You may visit the QNAP website or the following links for the latest compatibility information, firmware, technical guides, and other product information of the Turbo NAS.

Hardware and software compatibility information:

http://www.qnap.com/pro_compatibility.asp

Latest firmware of the NAS products:

<http://www.qnap.com/download.asp>

Application notes (technical guides and how-tos):

http://www.qnap.com/pro_features.asp

Online FAQ and QNAP Wiki:

<http://www.qnap.com/faq.asp>

http://wiki.qnap.com/wiki/Main_Page

2. Safety Information and Precautions

1. The NAS can operate normally in the temperature of 0°C–40°C and relative humidity of 0%–95%. Please make sure the environment is well-ventilated.
2. The power cord and devices connected to the NAS must provide correct supply voltage (100W, 90–264V).
3. Do not place the NAS in direct sunlight or near chemicals. Make sure the temperature and humidity of the environment are in optimized level.
4. Unplug the power cord and all the connected cables before cleaning. Wipe the NAS with a dry towel. Do not use chemical or aerosol to clean the NAS.
5. Do not place any objects on the NAS for the server's normal operation and to avoid overheat.
6. Use the flat head screws in the product package to lock the hard disk drives (HDD) in the NAS when installing the HDD for proper operation.
7. Do not place the NAS near any liquid.
8. Do not place the NAS on any uneven surface to avoid falling off and damage.
9. Make sure the voltage is correct in your location when using the NAS. If you are not sure, please contact the distributor or the local power supply company.
10. Do not place any object on the power cord.
11. Do not attempt to repair your NAS in any occasions. Improper disassembly of the product may expose you to electric shock or other risks. For any enquiries, please contact the distributor.
12. The chassis (also known as rack mount) NAS models should only be installed in the server room and maintained by the authorized server manager or IT administrator. The server room is locked by key or keycard access and only certified staff is allowed to enter the server room.



Warning:

Danger of explosion if battery is incorrectly replaced. Replace only with the same or equivalent type recommended by the manufacturer. Dispose of used batteries according to the manufacturer's instructions.

Do NOT touch the fan inside the system to avoid serious injuries.

3. Troubleshoot Hardware Issues

Q1. How to check if the NAS is a faulty unit?

A. If your NAS is not responding properly, please do the following to check if the NAS is a faulty unit.

Turn on the NAS without hard disk drives. You will hear the first beep upon pressing the power button, and another beep about 2 minutes later. If you did not hear the second beep, there might be a hardware problem with the NAS. Please contact your local distributor/reseller technical support.

Note: Make sure the alarm buzzer option for system operations (startup, shutdown, and firmware upgrade) has been enabled in "System Administration" > "Hardware" on the administration page of the NAS.



Caution: The NAS must be repaired by professional technicians, do not try to repair the server yourself.

Q2. The USB one touch copy button does not work. What should I do?

A. Please check the following:

1. The one touch copy button only works for the front USB port. Make sure your external USB device is connected to the front USB port of the NAS.
2. Login the NAS as an administrator. Go to "Backup" > "USB One Touch Copy" and configure the backup settings.
3. Check that the connected storage device is supported:

http://www.qnap.com/pro_compatibility.asp

Q3. What should I do if the system fan, LCD panel, or other hardware components are not working properly?

A. Do NOT repair or replace the hardware components yourself. Please contact your local reseller or distributor for repair or replacement services.

4. Chassis Replacement

Q1. What should I do if the chassis of the NAS is damaged?

If the chassis of your NAS is damaged, you may need to purchase a new chassis from an authorized distributor/reseller of QNAP and install the original hard disk drives to the new chassis. All the old disk data will be retained. Follow the steps below for chassis replacement.

1. Make sure the hard disk drives on the NAS are not damaged.
2. Prepare a new chassis of the same NAS model. Please contact your local distributor for the purchase information.
3. Turn off the NAS (damaged chassis).
4. Unplug the hard disk drives (with the original drive trays) from the original NAS (damaged chassis).
5. Install the hard disk drives (with the drive trays) to the new chassis according to the original hard drive order.
6. Turn on the NAS (new chassis) and check if it works properly.



Caution: The NAS must be repaired by professional technicians, do not try to repair the server yourself.

5. Troubleshoot Hard Disk Drive Issues

Q1. A hard disk drive error is shown on the NAS. What should I do?

A. Check if the following logs are shown.

1. The message "disk drive x failed or is unplugged" is shown on "System Administration" > "System Logs" (requires admin access to the web administration page of the NAS).
2. The message "disk drive x failed or is unplugged" is shown on the LCD panel (if available).
3. A disk error message is shown on "Disk Management" > "Volume Management", for example, "no disk".

Solution:

1. RAID 1, RAID 5, RAID 6: Turn off the NAS and replace the failed hard disk drive(s) with new one(s). Turn on the NAS after installing the new hard disk drive(s). The NAS will perform RAID rebuilding. If RAID rebuilding is successful, the NAS will run properly again and the RAID data protection will be active.
2. RAID 10: If only one hard drive fails or two non-adjacent hard drives fail, turn off the NAS and replace the failed hard disk drive(s) with new one(s). Turn on the NAS after installing the new hard disk drive(s). The NAS will perform RAID rebuilding. If RAID rebuilding is successful, the NAS will run properly again and the RAID data protection will be active. If two adjacent hard drives fail in a RAID 10 volume, the data cannot be recovered anymore. Please replace the hard drives and create a new disk volume with the new hard drives.

Note: It is recommended to replace the failed hard disk drives with new ones of the same brand and same model.

The RAID configuration cannot be rebuilt if the number of failed hard drives has exceeded the maximum limit. The disk data will be lost in such case.

3. Single disk volume, JBOD, RAID 0: Turn off the NAS; replace the damaged hard disk drive(s) and then restart the NAS. Upon successful system startup, login the NAS as an administrator. Go to "Disk Management" > "Volume Management" to configure the disk volume. The newly installed hard disk drive(s) will be formatted and all the disk data will be cleared.

Note: The data on the damaged hard disk drive(s) cannot be recovered.

Replacing the failed hard drive:

1. Take out the disk tray.
2. Remove the hard disk drive from the disk tray. Check if the hard disk drive is damaged. (Unplug the possible damaged hard disk drive and insert it to another NAS or machine (if any) to check if the hard disk drive can be read.)
3. Replace the damaged hard disk drive with a new one.
4. Check the master and slave settings of the hard disk drive.

Disk checking after replacing the failed hard disk drive:

1. Turn on the NAS.
2. Make sure no disk error message is shown on the LCD panel (if available).
3. Login the NAS as an administrator.
4. Check the disk status on "Disk Management" > "Volume Management". If the message "Not initialized" is shown, the hard disk drive is installed correctly.
5. To configure the new hard disk drive as single disk volume, initialize the hard disk drive by the web-based interface.
6. If the disk volume is configured as RAID 1/5/6, the NAS will rebuild the RAID configuration upon successful restart. Make sure the NAS works properly and no errors are shown after RAID rebuilding.

Q2. The NAS cannot detect the hard disk drive(s) and the web GUI says that the "hard disk failed or unplugged".

Possible reasons:

1. The hard disk drive is not supported. Please see the compatibility list:
http://www.qnap.com/pro_compatibility.asp
2. The hard disk drive may be damaged. Please try a different hard disk drive.
3. The drive bay may be damaged. Please insert the hard drive into another bay (if any) and try again.

6. Troubleshoot Power Supply Issues

Q. The NAS did not power on after I pressed the power button.

A. Make sure the power cable, power adaptor, and the power supply unit are connected correctly and the power supply is normal. If the problem persists, contact your local reseller or distributor for repair or replacement service.

Q. I have installed two power supply units on the NAS (available on some rack mount models). Why no error message was shown when I plugged out one of the power supply unit?

A. Please check if the redundant power supply mode is enabled on "System Administration" > "Hardware". When this function is enabled, the NAS will start to record the error messages about the power supply units on "System Logs".

Q. What is the use of the red button on the power supply unit (NAS with redundant power supply units only)?

A. The red button is used for resetting the power supply unit when an error occurs. When redundant power supply mode is enabled on "System Administration" > "Hardware" and the power supply unit is not functioning properly, press the red button to reset the power supply unit. If the error persists, contact your local reseller or distributor for technical support.

7. Troubleshoot Software Issues

Q. I have connected the NAS and my PC to the same subnet. However, the Finder cannot find my NAS.

A. Make sure your NAS and the PC are connected to the network correctly. If you are using Windows XP SP1, please do the following:

1. Go to "Control Panel" > "Network and Internet Connections" in the Category view or go to "Network Settings" > "Control Panel" in the Classic view.
2. Click "Network Connections" and double click the icon for your network connection.
3. Click "Properties" and select "Advanced" tab.
4. Uncheck the option "Internet Connection Firewall".
5. Install the Finder and try again.

If you are using Windows XP SP2, click "Unblock" when the Windows Firewall dialog appears to run the Finder. Windows 7 users can click "Allow access" to unblock the Finder from Windows Firewall. If the problem persists, check if other anti-virus programs or firewalls are running; disable them and run the Finder again.

If you still cannot access your NAS by the Finder or by entering the NAS IP in the web browser directly, please do the following:

Step 1. Check your LAN cable connection and the LAN LED is flashing.

Step 2. Check if the Status LED (same as the Power LED for some models) glows green. If the Status/Power LED flashes red or red and green alternatively, the NAS is not initialized or the hard drive(s) are not ready.

Step 3. Reset the NAS by pressing the reset button for 3–4 seconds. This will clear the administrator password and network settings (DHCP will be used and the default user name and password is: admin/admin).

After two beeps on the system startup, run the Finder again to find your NAS or open a web browser and enter `http://NAS_IP:8080`. (If your NAS is connected to your PC directly, the NAS IP is 169.254.100.100:8080).

Step 4. If you still cannot access the NAS after Step 3, please do the following.

1. Turn off the NAS.
2. Take out all the hard disk drives. Restart the NAS.

You will hear a beep after pressing the power button, followed by 2 beeps 2 minutes later. If you cannot hear the two beeps, the NAS may be defective. Please contact your local reseller or distributor for repair or replacement service.

8. Firmware Recovery Guide for ARM-based NAS Models

Applied QNAP NAS models: TS-110, TS-112, TS-119, TS-210, TS-212, TS-219, TS-219P, TS-410, TS-410U, TS-412, TS-412U, TS-419P, TS-419U, TS-419U+, TS-119P+, TS-219P+, and TS-419P+.

This firmware recovery guide is intended for users who encounter system startup failure due to incomplete or unsuccessful firmware update caused by power outage or network disconnection during the process. To verify that this guide applies to your NAS, follow the steps below:

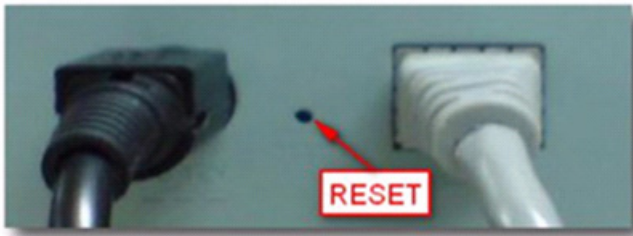
1. Power off the NAS.
2. Remove all the hard drives.
3. Power on the NAS.
4. Wait for ten seconds and check if you hear a short beep.
5. After the short beep, wait for two minutes to check if you hear a long beep.
6. If you only hear a short beep or do not hear any beep, follow the instructions of this guide to recover your NAS.

Follow the steps below to recover the NAS.

1. Download the live CD ISO image from the following links:
 - a. TS-110, TS-119, TS-210, TS-219, TS-219P
[ftp://csdread:csdread@ftp.qnap.com.tw/NAS/live_cd/Flash_Reburn_live-cd-2009-09-24\(TS-110&119&210&219&219P\).iso](ftp://csdread:csdread@ftp.qnap.com.tw/NAS/live_cd/Flash_Reburn_live-cd-2009-09-24(TS-110&119&210&219&219P).iso)
 - b. 1-bay, 2-bay, or 4-bay NAS models
[ftp://csdread:csdread@ftp.qnap.com.tw/NAS/live_cd/Flash_Reburn_live-cd-2009-12-09\(TS-410&410U&419P&419U\).iso](ftp://csdread:csdread@ftp.qnap.com.tw/NAS/live_cd/Flash_Reburn_live-cd-2009-12-09(TS-410&410U&419P&419U).iso)
 - c. TS-119P+, TS-219P+, or TS-419P+
[http://us1.qnap.com/Storage/tsd/live-cd-2010-10-08.\(TS-x19P+_Recovery\).iso](http://us1.qnap.com/Storage/tsd/live-cd-2010-10-08.(TS-x19P+_Recovery).iso)
 - d. TS-112/212/412/412U/419U/419U+
[http://us1.qnap.com/Storage/tsd/live-cd-2011-03-02\(TS-x12_412U_419U_419U+\).iso](http://us1.qnap.com/Storage/tsd/live-cd-2011-03-02(TS-x12_412U_419U_419U+).iso)

Note: Please use the ISO file (a) for 1-bay and 2-bay NAS models (TS-110/210/119/219/219P). If you failed to recover the NAS with the ISO file (a), please try the ISO file (b).

2. Burn the ISO file to a CD.
3. Insert the CD to a PC and boot up from the CD.
4. When the login prompt is shown, go to next step. No login is required.
5. Power off the NAS and remove all the hard drives.
6. Connect the NAS to the PC directly by an Ethernet cable. If your NAS provides two LAN ports, connect LAN 2 of the NAS to the PC.
7. Use a pen or any pointed object to press and hold the reset button of the NAS (see below).



8. Press the power button of the NAS and hold the button. Keep holding the button until you hear two short beeps in about 5-8 seconds. The Status LED of the NAS should be flashing red and green and then glows red.
9. The LAN LED of the NAS should be flashing for the first few seconds and then glows red.
10. LEAVE THE NAS ALONE AT THIS POINT! DO NOT TURN IT OFF OR UNPLUG THE POWER CORD. Wait for about 5 minutes.
11. Wait until you hear a long beep or two short beeps and the Status LED is flashing green. The NAS will then reboot. No intervention required during this stage.
12. The reboot process should take about 3 minutes. After that you should hear a long beep.
13. Connect the NAS to your switch or router and use the QNAP Finder to find the NAS.

What should I do if the startup problem persists?

If the startup problem persists, please return the NAS to your local distributor or reseller for system repair immediately.

Applied QNAP NAS models: TS-239 Pro, TS-239 Pro II, TS-239 Pro II+, TS-439 Pro, TS-439 Pro II, TS-439 Pro II+, TS-259 Pro, TS-259 Pro+, TS-459 Pro, TS-459 Pro+, TS-459 Pro II, TS-459U, TS-459U+, TS-559 Pro, TS-559 Pro+, TS-559 Pro II, TS-659 Pro, TS-659 Pro+, TS-659 Pro II, TS-859 Pro, TS-859 Pro+, TS-859U, TS-859U+, TS-509, TS-809, TS-809U, SS-439, SS-839.

This firmware recovery guide is intended for users who encounter system startup failure due to incomplete or unsuccessful firmware update caused by power outage or network disconnection during the process. To verify if this guide applies to your NAS, follow the steps below:

1. Power off the NAS.
2. Remove all the hard drives from the NAS.
3. Connect a VGA monitor and a USB keyboard to the NAS.



4. Power on the NAS.

AMI BIOS ...: The following screen shows the BIOS of the NAS can start up correctly.

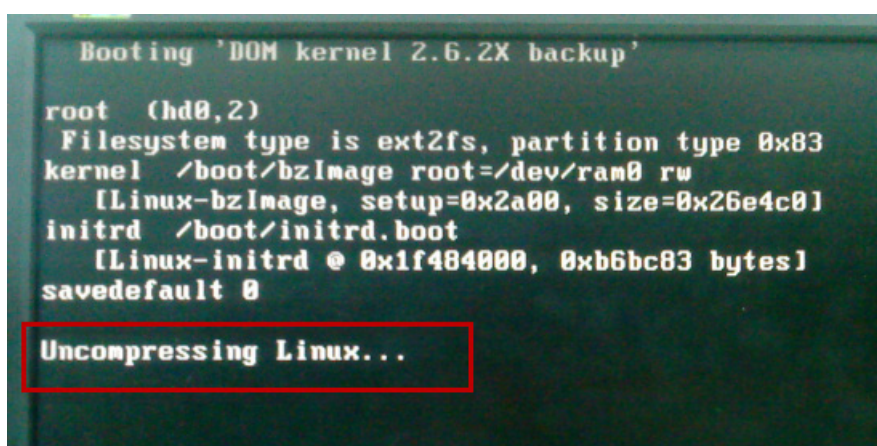
1023MB OK: The DRAM has been detected (the DRAM size depends on the NAS model).

128MB ATA Flash Disk ADAA408J: The DOM has been detected (the DOM size depends on the NAS model).



If the BIOS cannot be started or any component, such as the DRAM or DOM, cannot be detected correctly, please contact the local distributor immediately and send the NAS for repair. If the NAS can start up correctly after the hard drives have been removed, please replace the hard drives and try to start up the NAS again.

5. If the screen shows "Uncompressing Linux...", the system on the DOM is starting to boot up. However, if the system is corrupted, some error messages will be shown during the startup process. You can try to recover the system on the DOM by the following instructions.



6. To recover the system on the DOM, following the instructions described in sections A and B below.

A. Create a USB boot disk.

B. Use the USB boot disk to refresh the system on the DOM.

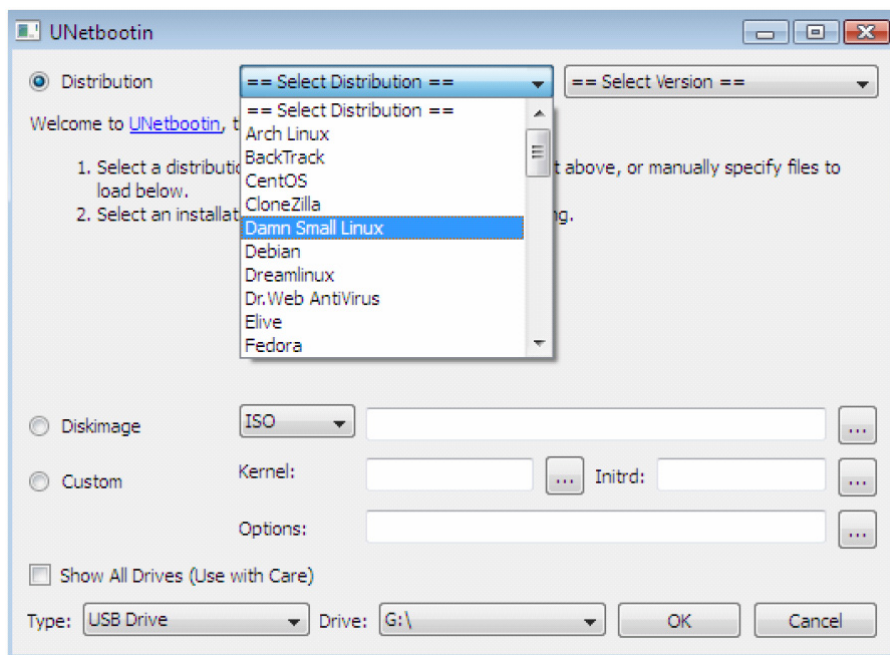
A. Create a USB boot disk

1. Download UNetbootin from <http://unetbootin.sourceforge.net>.

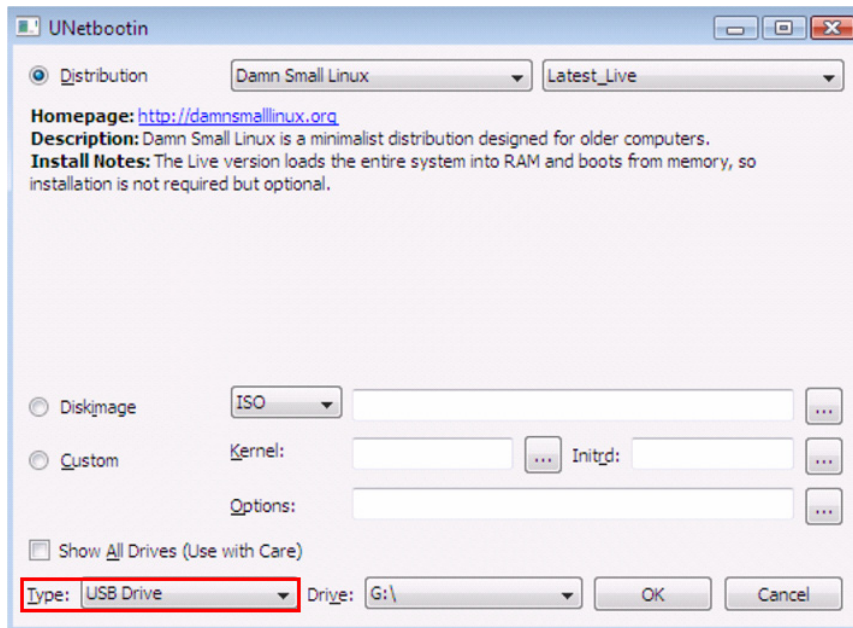
2. Plug a USB flash drive to your PC. The USB flash drive should contain free space of 1GB or more and formatted as FAT32.

3. Run UNetbootin.

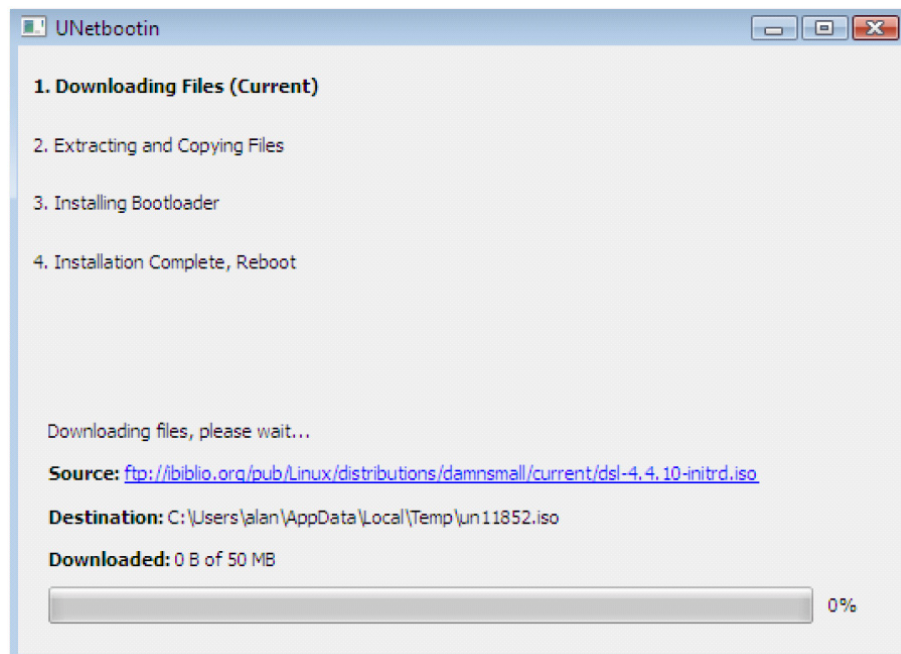
4. Select "Distribution" and then "Damn Small Linux".



5. Select "USB Drive" as the type and specify the drive location. Then click "OK".



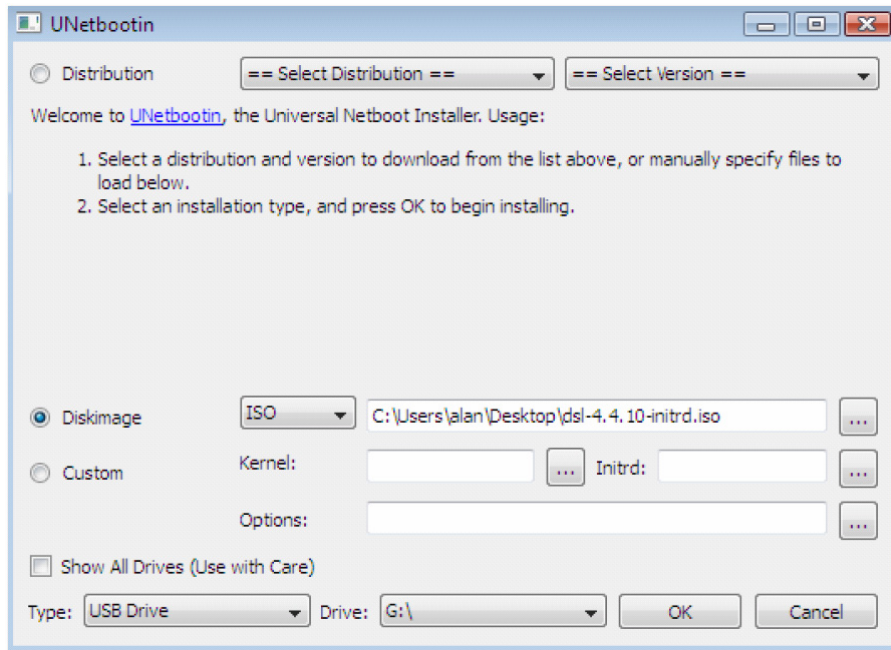
6. The program will download Damn Small Linux to the USB flash drive.



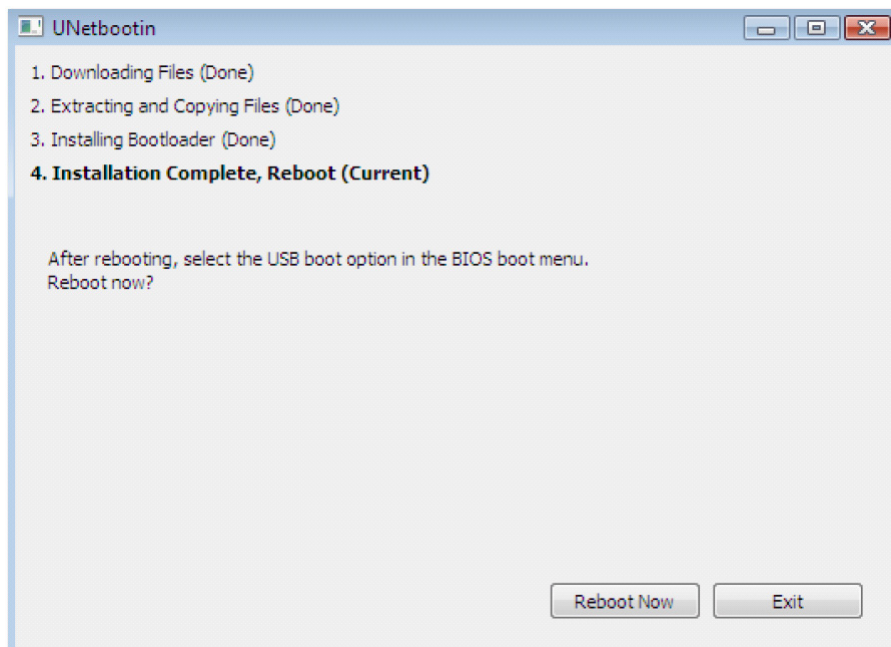
7. You can also download Damn Small Linux manually via the following link:

<http://distro.ibiblio.org/damnsmall/current/dsl-4.4.10-initrd.iso>

Then select "Diskimage" and specify the file location. Click "OK".



8. Click "Exit" upon successful installation.



9. Copy the DOM image(s) of the NAS to the USB flash drive (boot disk).

Image links:

TS-239 Pro

http://eu1.qnap.com/Storage/tsd/fullimage/F_TS-239_20091014-3.1.2.img

TS-239 Pro II

http://eu1.qnap.com/Storage/tsd/fullimage/F_TS-239PROII_20100928-1.0.6.img

TS-239 Pro II+

http://eu1.qnap.com/Storage/tsd/fullimage/F_TS-239PROII+_20110118-1.0.9.img

TS-259 Pro

http://eu1.qnap.com/Storage/tsd/fullimage/F_TS-259_20101129-1.0.9.img

TS-439 Pro

http://eu1.qnap.com/Storage/tsd/fullimage/F_TS-439_20091014-3.1.2.img

TS-439 Pro II

http://eu1.qnap.com/Storage/tsd/fullimage/F_TS-439PROII_20100928-1.0.6.img

TS-439 Pro II+

http://eu1.qnap.com/Storage/tsd/fullimage/F_TS-439PROII+_20101119-1.0.9.img

TS-439U

http://eu1.qnap.com/Storage/tsd/fullimage/F_TS-439U_20091014-3.1.2.img

TS-459 Pro, TS-459 Pro+, TS-459 Pro II

http://eu1.qnap.com/Storage/tsd/fullimage/F_TS-459_20101118-1.0.9.img

TS-459U, TS-459U+

http://eu1.qnap.com/Storage/tsd/fullimage/F_TS-459U_20101118-1.0.9.img

TS-509

http://eu1.qnap.com/Storage/tsd/fullimage/F_TS-509_20100302-1.0.1.img

TS-559 Pro, TS-559 Pro+, TS-559 Pro II

http://eu1.qnap.com/Storage/tsd/fullimage/F_TS-559_20101118-1.0.9.img

TS-639 Pro

http://eu1.qnap.com/Storage/tsd/fullimage/F_TS-639_20091014-3.1.2.img

TS-659 Pro, TS-659 Pro+, TS-659 Pro II

http://eu1.qnap.com/Storage/tsd/fullimage/F_TS-659_20101118-1.0.9.img

TS-809

http://eu1.qnap.com/Storage/tsd/fullimage/F_TS-809_20101119-1.0.9.img

TS-809U

http://eu1.qnap.com/Storage/tsd/fullimage/F_TS-809U_20101119-1.0.9.img

TS-859 Pro, TS-859 Pro+

http://eu1.qnap.com/Storage/tsd/fullimage/F_TS-859_20101118-1.0.9.img

TS-859U, TS-859U+

http://eu1.qnap.com/Storage/tsd/fullimage/F_TS-859U_20101118-1.0.9.img

SS-439

http://eu1.qnap.com/Storage/tsd/fullimage/F_SS-439_20090627-3.1.0.img

SS-839

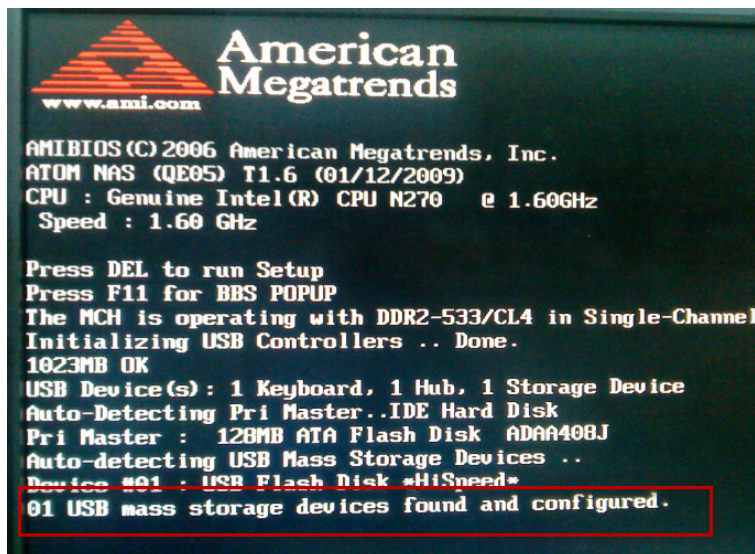
http://eu1.qnap.com/Storage/tsd/fullimage/F_SS-839_20091014-3.1.2.img

B. Re-flash the DOM on the NAS with the USB boot disk

1. Make sure your NAS is turned off and all hard drives have been removed from the NAS.
2. Connect a VGA monitor, a USB keyboard, and the USB boot disk to the NAS.



3. Turn on the NAS and press F11 key repeatedly.

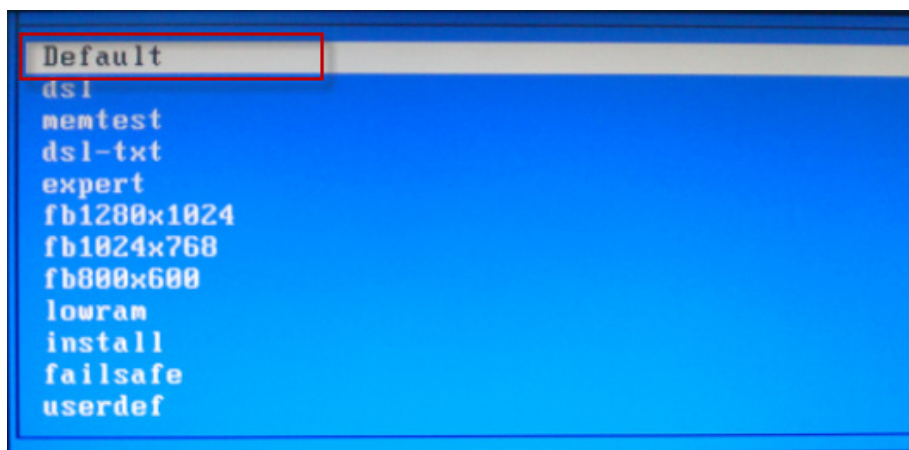


4. Select the USB flash drive as the boot device. If the menu is not shown, restart the NAS and repeat the previous step.

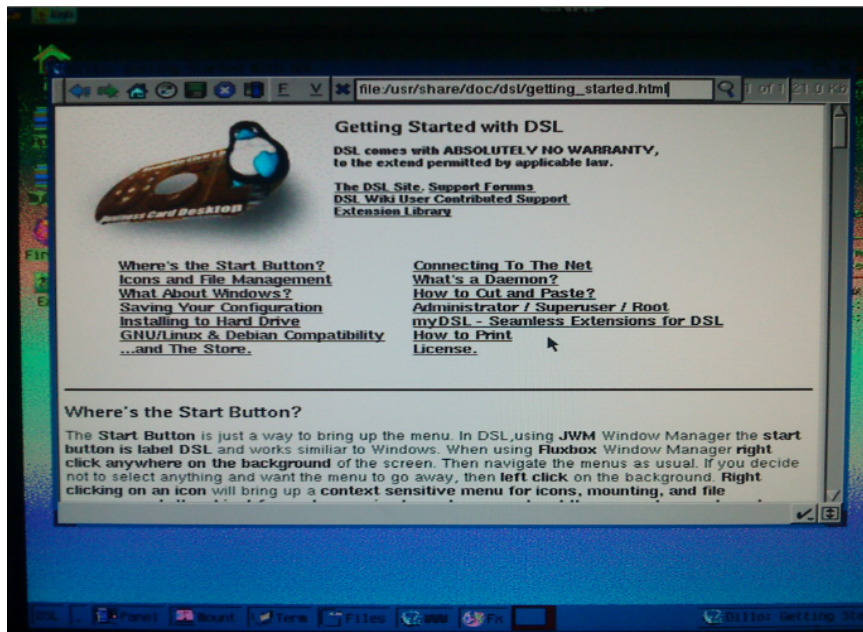
Note: If two USB devices are detected, do NOT select "USB DISK MODULE PMAP".



5. On the following menu, select "Default" for the monitor setting. Then, press <SPACE> to continue.



6. Upon complete bootup, the following window will be shown.



7. Press Ctrl+Alt+Del to enter command line.

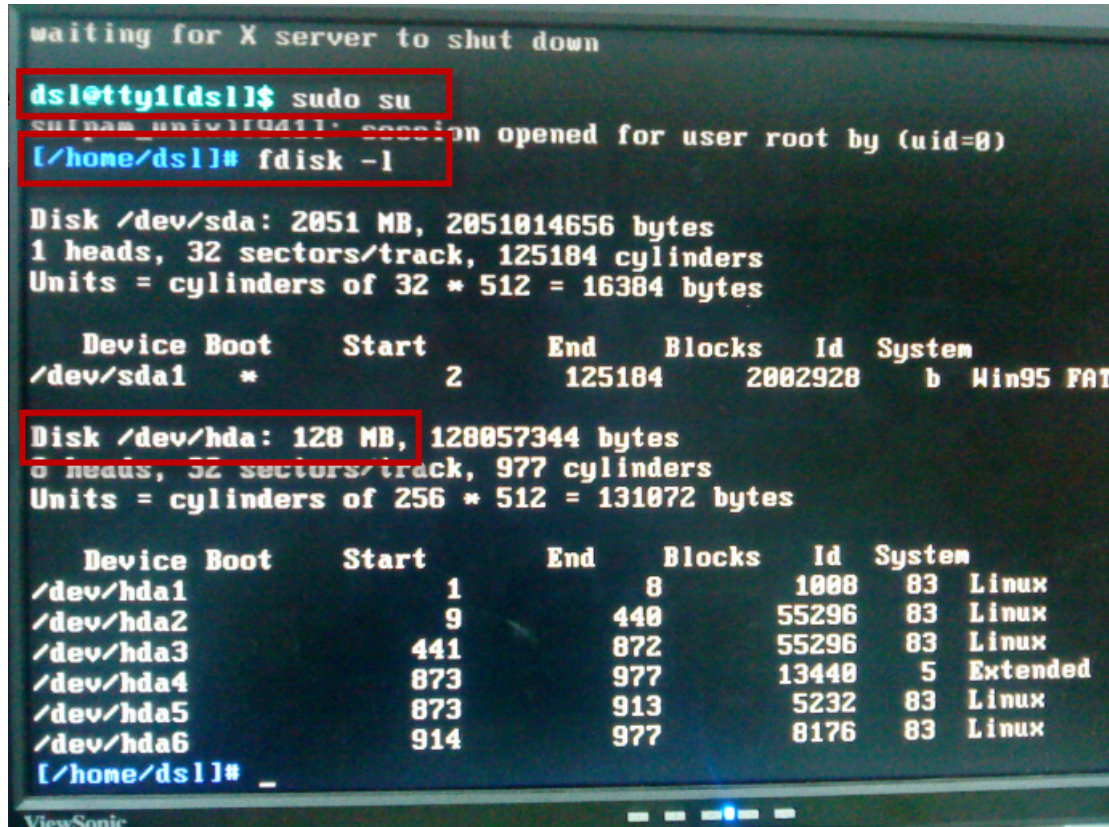
8. Input the following command:

```
# sudo su
```

```
# fdisk -l
```

/dev/sda is your flash drive.

/dev/sdb or /dev/hda is the DOM drive. The size should be 128 MB or 512 MB depending on the NAS model.



The screenshot shows a terminal window with the following content:

```
waiting for X server to shut down
dsl@tty1(dsl)$ sudo su
shimam_anti110411: session opened for user root by (uid=0)
[/home/dsl]# fdisk -l
```

Disk /dev/sda: 2051 MB, 2051014656 bytes
1 heads, 32 sectors/track, 125184 cylinders
Units = cylinders of 32 * 512 = 16384 bytes

Device	Boot	Start	End	Blocks	Id	System
/dev/sda1	*	2	125184	2002928	b	Win95 FAT

Disk /dev/hda: 128 MB, 128057344 bytes
0 heads, 32 sectors/track, 977 cylinders
Units = cylinders of 256 * 512 = 131072 bytes

Device	Boot	Start	End	Blocks	Id	System
/dev/hda1		1	8	1008	83	Linux
/dev/hda2		9	440	55296	83	Linux
/dev/hda3		441	872	55296	83	Linux
/dev/hda4		873	977	13440	5	Extended
/dev/hda5		873	913	5232	83	Linux
/dev/hda6		914	977	8176	83	Linux

```
[/home/dsl]# _
```

9. Input the following command:

```
# mkdir usbdrive
```

```
# mount /dev/sda1 /home/dsl/usbdrive
```

```
# cd /home/dsl/usbdrive
```

10. Input the following command:

```
# cp dom.img /dev/sdb
```

"dom.img" is the firmware name.

/dev/sdb or /dev/hda is the drive name of the DOM (depending on the NAS model).

11. Reboot your NAS with the command:

reboot

```
[/home/dsl]# fdisk -l

Disk /dev/sda: 2051 MB, 2051014656 bytes
1 heads, 32 sectors/track, 125184 cylinders
Units = cylinders of 32 * 512 = 16384 bytes

   Device Boot      Start         End      Blocks   Id  System
/dev/sda1  *           2        125184     2002928    b  Win95 F

Disk /dev/hda: 128 MB, 128057344 bytes
8 heads, 32 sectors/track, 977 cylinders
Units = cylinders of 256 * 512 = 131072 bytes

   Device Boot      Start         End      Blocks   Id  System
/dev/hda1             1           8         1008    83  Linux
/dev/hda2             9          440       55296    83  Linux
/dev/hda3          441          872       55296    83  Linux
/dev/hda4          873          977       13440     5  Extended
/dev/hda5          873          913        5232    83  Linux
/dev/hda6          914          977        8176    83  Linux

[/home/dsl]# mkdir usbdrive
[/home/dsl]# mount /dev/sda1 /home/dsl/usbdrive
[/home/dsl]# cd /home/dsl/usbdrive
[/home/dsl/usbdrive]# cp dom.img /dev/hda
[/home/dsl/usbdrive]# reboot
```

12. Connect the NAS to your switch or router and use the QNAP Finder to find the NAS. If the NAS can be connected, you may turn off the NAS, install the hard drives, and turn on the NAS to configure the system again.

What should I do if the startup problem persists?

If the startup problem persists, please return the NAS to your local distributor or reseller for system repair immediately.

9. Firmware Recovery Guide for Intel x86-based NAS Models

Applied QNAP NAS models: TS-239, TS-439, TS-239 Pro II, TS-439 Pro II, SS-439, SS-839, TS-509, TS-809/809U, TS-x59, and TS-x59 Pro+ series.

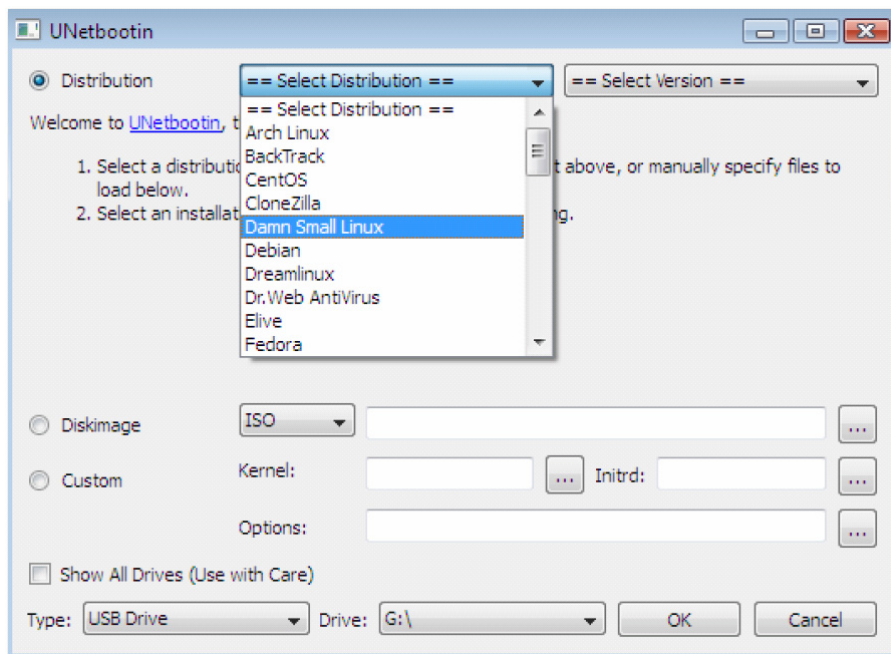
This firmware recovery guide is intended for users who encounter system startup failure due to incomplete or unsuccessful firmware update caused by power outage or network disconnection during the process. To verify if this guide applies to your NAS, follow the steps below:

1. Power off the NAS.
2. Remove all the hard drives.
3. Power on the NAS.
4. Wait for ten seconds and check if you hear a short beep.
5. After the short beep, wait for two minutes to check if you hear a long beep.
6. If you only hear a short beep or do not hear any beep, follow the instructions of this guide to recover your NAS.

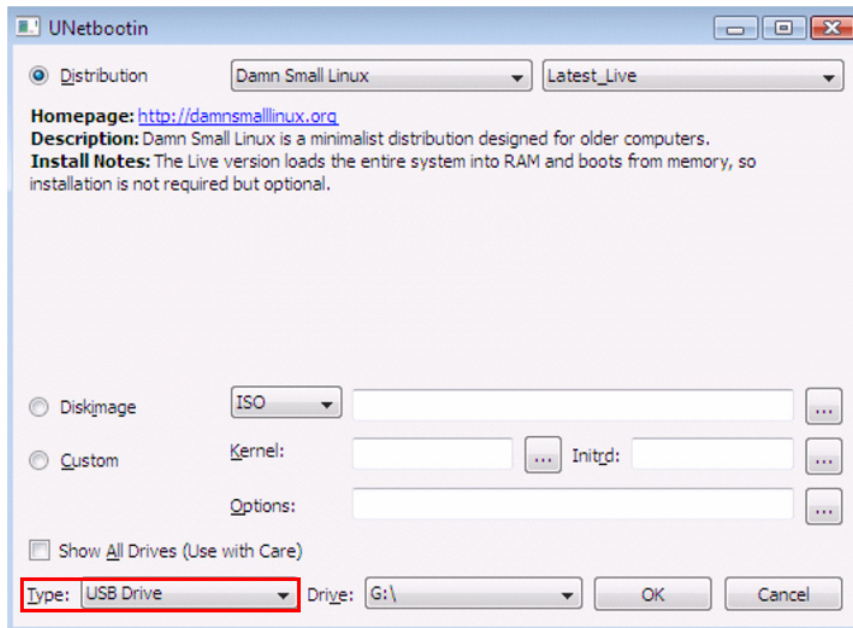
Follow the steps below to recover the NAS.

Create a USB boot disk

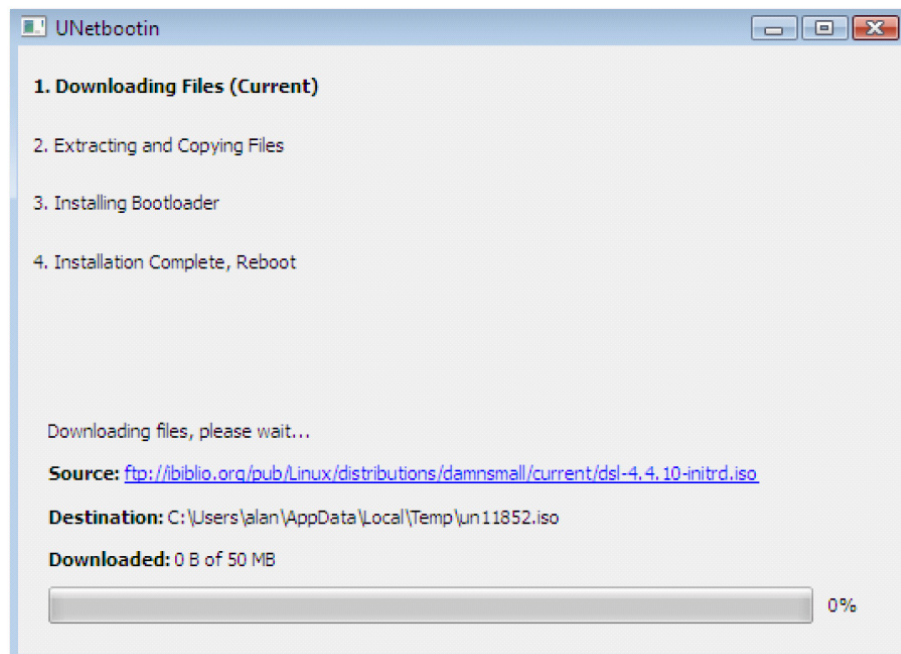
1. Download UNetbootin from <http://unetbootin.sourceforge.net>.
2. Plug a USB flash drive to your PC. The USB flash drive should contain free space of 1GB or more and formatted as FAT32.
3. Run UNetbootin.
4. Select "Distribution" and then "Damn Small Linux".



5. Select "USB Drive" as the type and specify the drive location. Then click "OK".



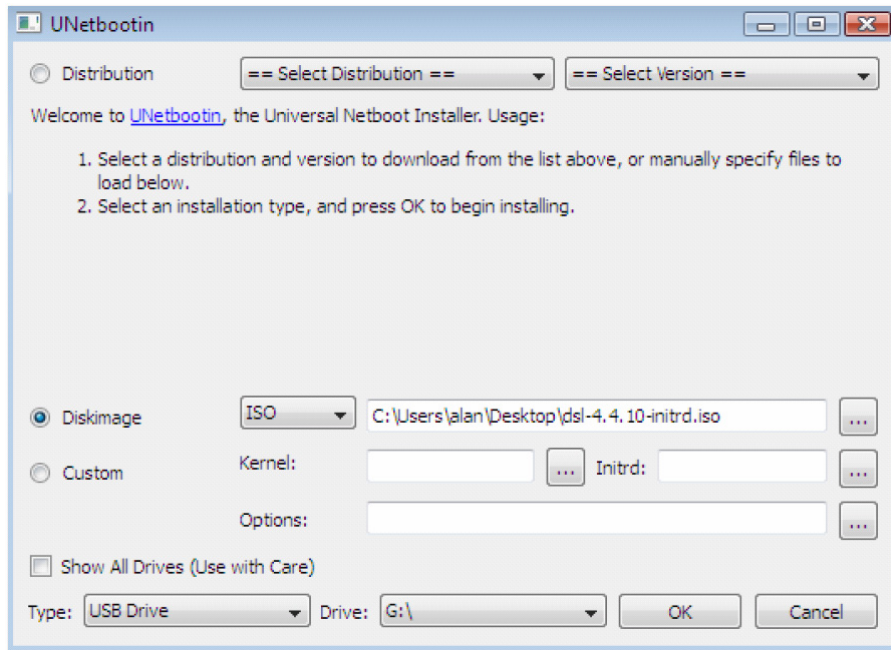
6. The program will download Damn Small Linux to the USB flash drive.



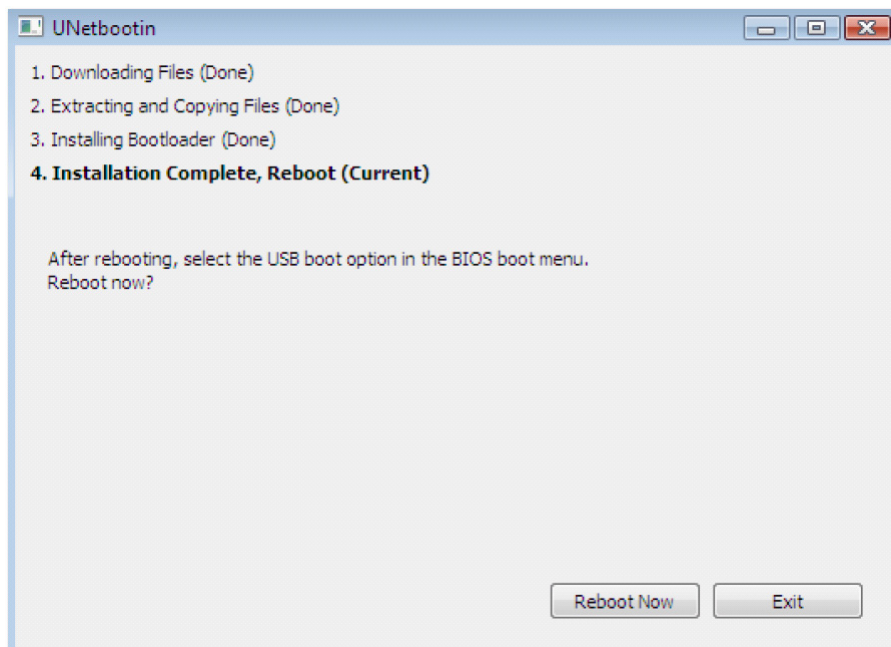
7. You can also download Damn Small Linux manually via the following link:

<http://distro.ibiblio.org/damnsmall/current/dsl-4.4.10-initrd.iso>

Then select "Diskimage" and specify the file location. Click "OK".



8. Click "Exit" upon successful installation.

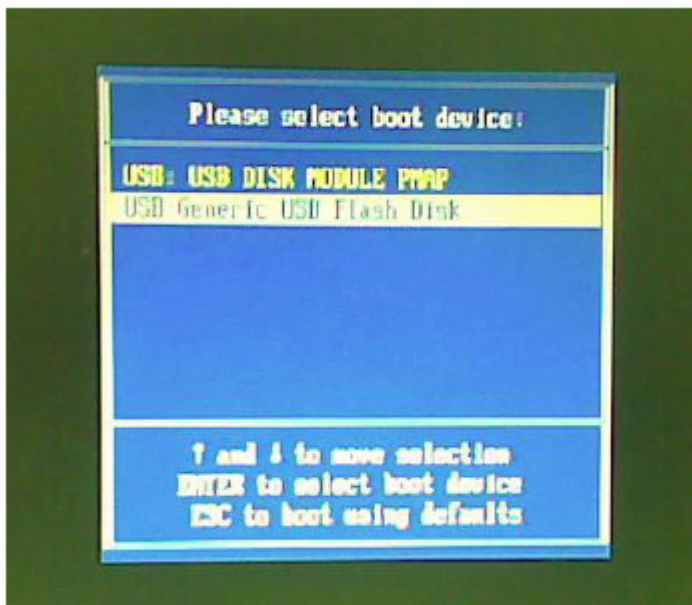


9. Copy the DOM image(s) to the USB flash drive (boot disk).

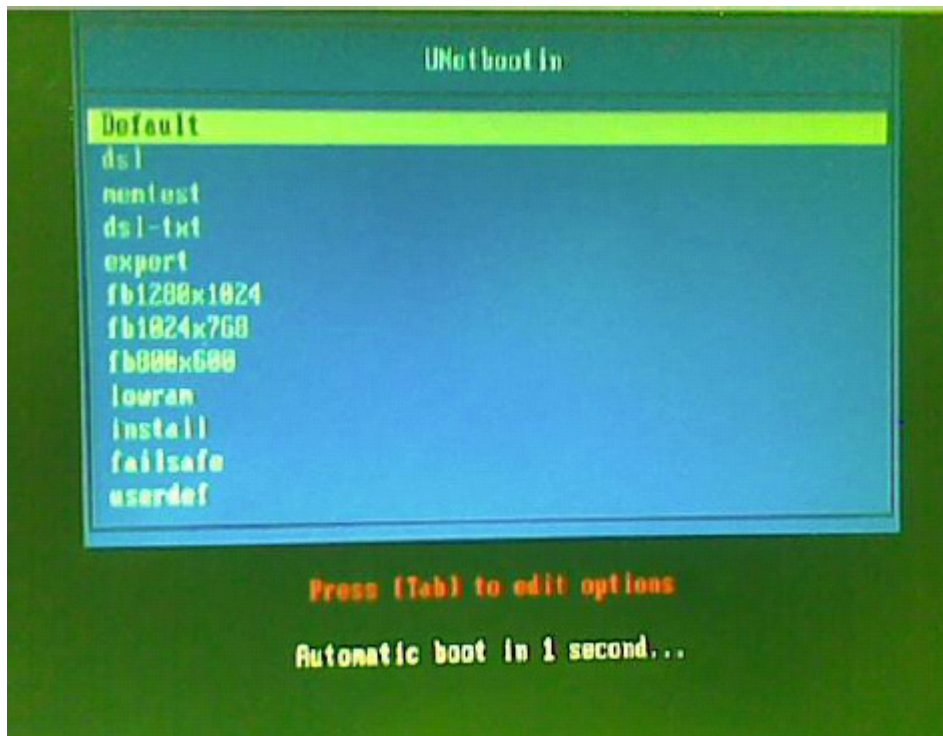
Re-flash the DOM on the NAS with the USB boot disk

1. Make sure your NAS is turned off and all hard drives have been removed from the NAS.
2. Connect a VGA monitor, a USB keyboard, and your USB boot disk to the rear of your NAS.
3. Turn on the NAS and press F11 key repeatedly.
4. Select the USB flash drive as the boot device. If the menu is not shown, restart the NAS and repeat the previous step.

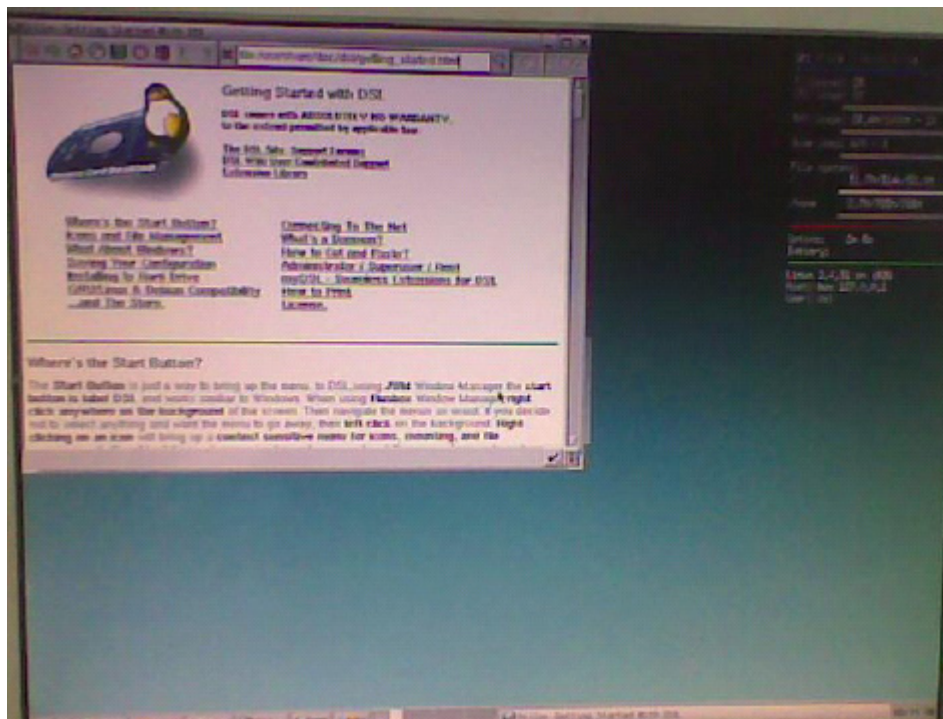
Note: If two USB devices are detected, do NOT select "USB DISK MODULE PMAP".



5. Select "Default" on the next menu.



6. Upon complete bootup, the following window will be shown.



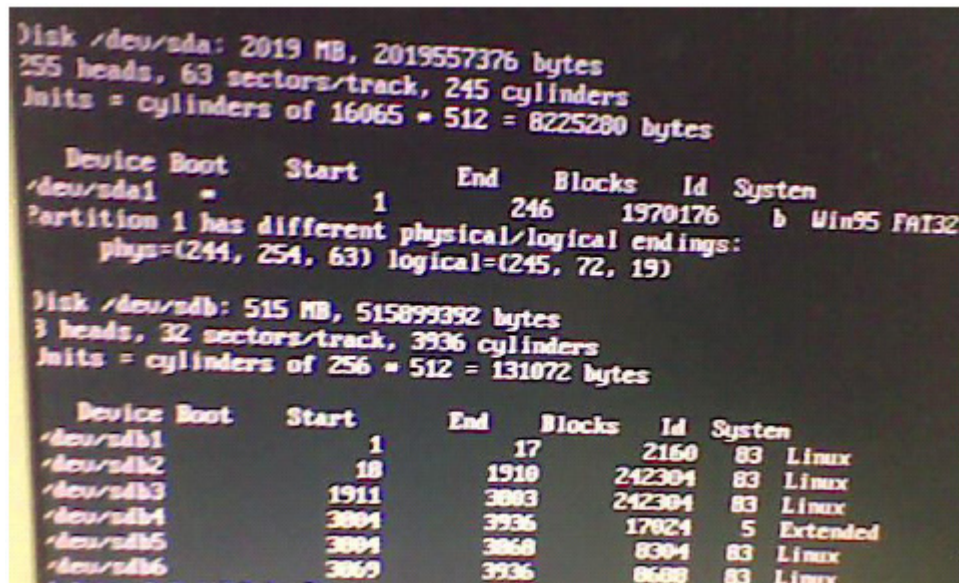
7. Press Ctrl+Alt+Del to enter the command line.

8. Input the following command:

```
# sudo su
```

```
# fdisk -l
```

9. The following result will be shown.



```
Disk /dev/sda: 2019 MB, 2019557376 bytes
255 heads, 63 sectors/track, 245 cylinders
Units = cylinders of 16065 * 512 = 8225280 bytes

   Device Boot      Start         End      Blocks   Id  System
/dev/sda1            1           246     1970176    b  Win95 FAT32
Partition 1 has different physical/logical endings:
   phys=(244, 254, 63) logical=(245, 72, 19)

Disk /dev/sdb: 515 MB, 515899392 bytes
3 heads, 32 sectors/track, 3936 cylinders
Units = cylinders of 256 * 512 = 131072 bytes

   Device Boot      Start         End      Blocks   Id  System
/dev/sdb1            1           17        2160    83  Linux
/dev/sdb2           18          1910     242304    83  Linux
/dev/sdb3          1911          3003     242304    83  Linux
/dev/sdb4          3004          3936     17024     5  Extended
/dev/sdb5          3004          3060        8304    83  Linux
/dev/sdb6          3061          3936        8608    83  Linux
```

/dev/sda is your flash drive; **/dev/sdb**, about 128MB or 512MB, is the DOM to be re-flashed.

10. Input the following command:

```
# mkdir usbdrive
```

```
# mount /dev/sda1 /home/dsl/usbdrive
```

```
# cd /home/dsl/usbdrive
```

11. Input the following command:

```
# cp dom.img /dev/sdb
```

"dom.img" is the firmware name; /dev/sdb is the drive name of the DOM.

12. Reboot your NAS with the command:

```
# reboot
```

13. Connect the NAS to your switch or router and use the QNAP Finder to find the NAS. If the NAS can be connected, you may turn off the NAS, install the hard drives and turn

What should I do if the startup problem persists?

If the startup problem persists, please return the NAS to your local distributor or reseller for system repair immediately.

Technical Support

Online Support: <http://www.qnap.com>

MSN: q.support@hotmail.com

Skype: qnapskype

Forum: <http://forum.qnap.com>

Technical Support in the USA and Canada:

Email: q_supportus@qnap.com

TEL: 909-595-2819

Address: 166 University Parkway, Pomona CA 91768

Service Hours: 08:00-17:00 (GMT -08:00 Pacific Time, Monday to Friday)

GNU GENERAL PUBLIC LICENSE

Version 3, 29 June 2007

Copyright © 2007 Free Software Foundation, Inc. <<http://fsf.org/>>

Everyone is permitted to copy and distribute verbatim copies of this license document, but changing it is not allowed.

Preamble

The GNU General Public License is a free, copyleft license for software and other kinds of works.

The licenses for most software and other practical works are designed to take away your freedom to share and change the works. By contrast, the GNU General Public License is intended to guarantee your freedom to share and change all versions of a program--to make sure it remains free software for all its users. We, the Free Software Foundation, use the GNU General Public License for most of our software; it applies also to any other work released this way by its authors. You can apply it to your programs, too.

When we speak of free software, we are referring to freedom, not price. Our General Public Licenses are designed to make sure that you have the freedom to distribute copies of free software (and charge for them if you wish), that you receive source code or can get it if you want it, that you can change the software or use pieces of it in new free programs, and that you know you can do these things.

To protect your rights, we need to prevent others from denying you these rights or asking you to surrender the rights. Therefore, you have certain responsibilities if you distribute copies of the software, or if you modify it: responsibilities to respect the freedom of others.

For example, if you distribute copies of such a program, whether gratis or for a fee, you must pass on to the recipients the same freedoms that you received. You must make sure that they, too, receive or can get the source code. And you must show them these terms so they know their rights.

Developers that use the GNU GPL protect your rights with two steps: (1) assert copyright on the software, and (2) offer you this License giving you legal permission to copy,

distribute and/or modify it.

For the developers' and authors' protection, the GPL clearly explains that there is no warranty for this free software. For both users' and authors' sake, the GPL requires that modified versions be marked as changed, so that their problems will not be attributed erroneously to authors of previous versions.

Some devices are designed to deny users access to install or run modified versions of the software inside them, although the manufacturer can do so. This is fundamentally incompatible with the aim of protecting users' freedom to change the software. The systematic pattern of such abuse occurs in the area of products for individuals to use, which is precisely where it is most unacceptable. Therefore, we have designed this version of the GPL to prohibit the practice for those products. If such problems arise substantially in other domains, we stand ready to extend this provision to those domains in future versions of the GPL, as needed to protect the freedom of users.

Finally, every program is threatened constantly by software patents. States should not allow patents to restrict development and use of software on general-purpose computers, but in those that do, we wish to avoid the special danger that patents applied to a free program could make it effectively proprietary. To prevent this, the GPL assures that patents cannot be used to render the program non-free.

The precise terms and conditions for copying, distribution and modification follow.

TERMS AND CONDITIONS

0. Definitions.

"This License" refers to version 3 of the GNU General Public License.

"Copyright" also means copyright-like laws that apply to other kinds of works, such as semiconductor masks.

"The Program" refers to any copyrightable work licensed under this License. Each licensee is addressed as "you". "Licensees" and "recipients" may be individuals or organizations.

To "modify" a work means to copy from or adapt all or part of the work in a fashion requiring copyright permission, other than the making of an exact copy. The resulting work is called a "modified version" of the earlier work or a work "based on" the earlier work.

A “covered work” means either the unmodified Program or a work based on the Program.

To “propagate” a work means to do anything with it that, without permission, would make you directly or secondarily liable for infringement under applicable copyright law, except executing it on a computer or modifying a private copy. Propagation includes copying, distribution (with or without modification), making available to the public, and in some countries other activities as well.

To “convey” a work means any kind of propagation that enables other parties to make or receive copies. Mere interaction with a user through a computer network, with no transfer of a copy, is not conveying.

An interactive user interface displays “Appropriate Legal Notices” to the extent that it includes a convenient and prominently visible feature that (1) displays an appropriate copyright notice, and (2) tells the user that there is no warranty for the work (except to the extent that warranties are provided), that licensees may convey the work under this License, and how to view a copy of this License. If the interface presents a list of user commands or options, such as a menu, a prominent item in the list meets this criterion.

1. Source Code.

The “source code” for a work means the preferred form of the work for making modifications to it. “Object code” means any non-source form of a work.

A “Standard Interface” means an interface that either is an official standard defined by a recognized standards body, or, in the case of interfaces specified for a particular programming language, one that is widely used among developers working in that language.

The “System Libraries” of an executable work include anything, other than the work as a whole, that (a) is included in the normal form of packaging a Major Component, but which is not part of that Major Component, and (b) serves only to enable use of the work with that Major Component, or to implement a Standard Interface for which an implementation is available to the public in source code form. A “Major Component”, in this context, means a major essential component (kernel, window system, and so on) of the specific operating system (if any) on which the executable work runs, or a compiler used to produce the work, or an object code interpreter used to run it.

The “Corresponding Source” for a work in object code form means all the source code

needed to generate, install, and (for an executable work) run the object code and to modify the work, including scripts to control those activities. However, it does not include the work's System Libraries, or general-purpose tools or generally available free programs which are used unmodified in performing those activities but which are not part of the work. For example, Corresponding Source includes interface definition files associated with source files for the work, and the source code for shared libraries and dynamically linked subprograms that the work is specifically designed to require, such as by intimate data communication or control flow between those subprograms and other parts of the work.

The Corresponding Source need not include anything that users can regenerate automatically from other parts of the Corresponding Source.

The Corresponding Source for a work in source code form is that same work.

2. Basic Permissions.

All rights granted under this License are granted for the term of copyright on the Program, and are irrevocable provided the stated conditions are met. This License explicitly affirms your unlimited permission to run the unmodified Program. The output from running a covered work is covered by this License only if the output, given its content, constitutes a covered work. This License acknowledges your rights of fair use or other equivalent, as provided by copyright law.

You may make, run and propagate covered works that you do not convey, without conditions so long as your license otherwise remains in force. You may convey covered works to others for the sole purpose of having them make modifications exclusively for you, or provide you with facilities for running those works, provided that you comply with the terms of this License in conveying all material for which you do not control copyright. Those thus making or running the covered works for you must do so exclusively on your behalf, under your direction and control, on terms that prohibit them from making any copies of your copyrighted material outside their relationship with you.

Conveying under any other circumstances is permitted solely under the conditions stated below. Sublicensing is not allowed; section 10 makes it unnecessary.

3. Protecting Users' Legal Rights From Anti-Circumvention Law.

No covered work shall be deemed part of an effective technological measure under any applicable law fulfilling obligations under article 11 of the WIPO copyright treaty adopted on 20 December 1996, or similar laws prohibiting or restricting circumvention of such

measures.

When you convey a covered work, you waive any legal power to forbid circumvention of technological measures to the extent such circumvention is effected by exercising rights under this License with respect to the covered work, and you disclaim any intention to limit operation or modification of the work as a means of enforcing, against the work's users, your or third parties' legal rights to forbid circumvention of technological measures.

4. Conveying Verbatim Copies.

You may convey verbatim copies of the Program's source code as you receive it, in any medium, provided that you conspicuously and appropriately publish on each copy an appropriate copyright notice; keep intact all notices stating that this License and any non-permissive terms added in accord with section 7 apply to the code; keep intact all notices of the absence of any warranty; and give all recipients a copy of this License along with the Program.

You may charge any price or no price for each copy that you convey, and you may offer support or warranty protection for a fee.

5. Conveying Modified Source Versions.

You may convey a work based on the Program, or the modifications to produce it from the Program, in the form of source code under the terms of section 4, provided that you also meet all of these conditions:

- a) The work must carry prominent notices stating that you modified it, and giving a relevant date.
- b) The work must carry prominent notices stating that it is released under this License and any conditions added under section 7. This requirement modifies the requirement in section 4 to "keep intact all notices".
- c) You must license the entire work, as a whole, under this License to anyone who comes into possession of a copy. This License will therefore apply, along with any applicable section 7 additional terms, to the whole of the work, and all its parts, regardless of how they are packaged. This License gives no permission to license the work in any other way, but it does not invalidate such permission if you have separately received it.
- d) If the work has interactive user interfaces, each must display Appropriate Legal Notices; however, if the Program has interactive interfaces that do not display Appropriate Legal Notices, your work need not make them do so.

A compilation of a covered work with other separate and independent works, which are not

by their nature extensions of the covered work, and which are not combined with it such as to form a larger program, in or on a volume of a storage or distribution medium, is called an "aggregate" if the compilation and its resulting copyright are not used to limit the access or legal rights of the compilation's users beyond what the individual works permit. Inclusion of a covered work in an aggregate does not cause this License to apply to the other parts of the aggregate.

6. Conveying Non-Source Forms.

You may convey a covered work in object code form under the terms of sections 4 and 5, provided that you also convey the machine-readable Corresponding Source under the terms of this License, in one of these ways:

- a) Convey the object code in, or embodied in, a physical product (including a physical distribution medium), accompanied by the Corresponding Source fixed on a durable physical medium customarily used for software interchange.
- b) Convey the object code in, or embodied in, a physical product (including a physical distribution medium), accompanied by a written offer, valid for at least three years and valid for as long as you offer spare parts or customer support for that product model, to give anyone who possesses the object code either (1) a copy of the Corresponding Source for all the software in the product that is covered by this License, on a durable physical medium customarily used for software interchange, for a price no more than your reasonable cost of physically performing this conveying of source, or (2) access to copy the Corresponding Source from a network server at no charge.
- c) Convey individual copies of the object code with a copy of the written offer to provide the Corresponding Source. This alternative is allowed only occasionally and noncommercially, and only if you received the object code with such an offer, in accord with subsection 6b.
- d) Convey the object code by offering access from a designated place (gratis or for a charge), and offer equivalent access to the Corresponding Source in the same way through the same place at no further charge. You need not require recipients to copy the Corresponding Source along with the object code. If the place to copy the object code is a network server, the Corresponding Source may be on a different server (operated by you or a third party) that supports equivalent copying facilities, provided you maintain clear directions next to the object code saying where to find the Corresponding Source. Regardless of what server hosts the Corresponding Source, you remain obligated to ensure that it is available for as long as needed to satisfy these requirements.
- e) Convey the object code using peer-to-peer transmission, provided you inform other peers where the object code and Corresponding Source of the work are being offered to the general public at no charge under subsection 6d.

A separable portion of the object code, whose source code is excluded from the Corresponding Source as a System Library, need not be included in conveying the object code work.

A “User Product” is either (1) a “consumer product”, which means any tangible personal property which is normally used for personal, family, or household purposes, or (2) anything designed or sold for incorporation into a dwelling. In determining whether a product is a consumer product, doubtful cases shall be resolved in favor of coverage. For a particular product received by a particular user, “normally used” refers to a typical or common use of that class of product, regardless of the status of the particular user or of the way in which the particular user actually uses, or expects or is expected to use, the product. A product is a consumer product regardless of whether the product has substantial commercial, industrial or non-consumer uses, unless such uses represent the only significant mode of use of the product.

“Installation Information” for a User Product means any methods, procedures, authorization keys, or other information required to install and execute modified versions of a covered work in that User Product from a modified version of its Corresponding Source. The information must suffice to ensure that the continued functioning of the modified object code is in no case prevented or interfered with solely because modification has been made.

If you convey an object code work under this section in, or with, or specifically for use in, a User Product, and the conveying occurs as part of a transaction in which the right of possession and use of the User Product is transferred to the recipient in perpetuity or for a fixed term (regardless of how the transaction is characterized), the Corresponding Source conveyed under this section must be accompanied by the Installation Information. But this requirement does not apply if neither you nor any third party retains the ability to install modified object code on the User Product (for example, the work has been installed in ROM).

The requirement to provide Installation Information does not include a requirement to continue to provide support service, warranty, or updates for a work that has been modified or installed by the recipient, or for the User Product in which it has been modified or installed. Access to a network may be denied when the modification itself materially and adversely affects the operation of the network or violates the rules and protocols for communication across the network.

Corresponding Source conveyed, and Installation Information provided, in accord with this section must be in a format that is publicly documented (and with an implementation available to the public in source code form), and must require no special password or key for unpacking, reading or copying.

7. Additional Terms.

“Additional permissions” are terms that supplement the terms of this License by making exceptions from one or more of its conditions. Additional permissions that are applicable to the entire Program shall be treated as though they were included in this License, to the extent that they are valid under applicable law. If additional permissions apply only to part of the Program, that part may be used separately under those permissions, but the entire Program remains governed by this License without regard to the additional permissions.

When you convey a copy of a covered work, you may at your option remove any additional permissions from that copy, or from any part of it. (Additional permissions may be written to require their own removal in certain cases when you modify the work.) You may place additional permissions on material, added by you to a covered work, for which you have or can give appropriate copyright permission.

Notwithstanding any other provision of this License, for material you add to a covered work, you may (if authorized by the copyright holders of that material) supplement the terms of this License with terms:

- a) Disclaiming warranty or limiting liability differently from the terms of sections 15 and 16 of this License; or
- b) Requiring preservation of specified reasonable legal notices or author attributions in that material or in the Appropriate Legal Notices displayed by works containing it; or
- c) Prohibiting misrepresentation of the origin of that material, or requiring that modified versions of such material be marked in reasonable ways as different from the original version; or
- d) Limiting the use for publicity purposes of names of licensors or authors of the material; or
- e) Declining to grant rights under trademark law for use of some trade names, trademarks, or service marks; or
- f) Requiring indemnification of licensors and authors of that material by anyone who conveys the material (or modified versions of it) with contractual assumptions of liability to the recipient, for any liability that these contractual assumptions directly impose on those licensors and authors.

All other non-permissive additional terms are considered “further restrictions” within the meaning of section 10. If the Program as you received it, or any part of it, contains a notice stating that it is governed by this License along with a term that is a further restriction, you may remove that term. If a license document contains a further restriction but permits relicensing or conveying under this License, you may add to a covered work material governed by the terms of that license document, provided that the further restriction does not survive such relicensing or conveying.

If you add terms to a covered work in accord with this section, you must place, in the relevant source files, a statement of the additional terms that apply to those files, or a notice indicating where to find the applicable terms.

Additional terms, permissive or non-permissive, may be stated in the form of a separately written license, or stated as exceptions; the above requirements apply either way.

8. Termination.

You may not propagate or modify a covered work except as expressly provided under this License. Any attempt otherwise to propagate or modify it is void, and will automatically terminate your rights under this License (including any patent licenses granted under the third paragraph of section 11).

However, if you cease all violation of this License, then your license from a particular copyright holder is reinstated (a) provisionally, unless and until the copyright holder explicitly and finally terminates your license, and (b) permanently, if the copyright holder fails to notify you of the violation by some reasonable means prior to 60 days after the cessation.

Moreover, your license from a particular copyright holder is reinstated permanently if the copyright holder notifies you of the violation by some reasonable means, this is the first time you have received notice of violation of this License (for any work) from that copyright holder, and you cure the violation prior to 30 days after your receipt of the notice.

Termination of your rights under this section does not terminate the licenses of parties who have received copies or rights from you under this License. If your rights have been terminated and not permanently reinstated, you do not qualify to receive new licenses for the same material under section 10.

9. Acceptance Not Required for Having Copies.

You are not required to accept this License in order to receive or run a copy of the Program. Ancillary propagation of a covered work occurring solely as a consequence of using peer-to-peer transmission to receive a copy likewise does not require acceptance. However, nothing other than this License grants you permission to propagate or modify any covered work. These actions infringe copyright if you do not accept this License. Therefore, by modifying or propagating a covered work, you indicate your acceptance of this License to do so.

10. Automatic Licensing of Downstream Recipients.

Each time you convey a covered work, the recipient automatically receives a license from the original licensors, to run, modify and propagate that work, subject to this License. You are not responsible for enforcing compliance by third parties with this License.

An "entity transaction" is a transaction transferring control of an organization, or substantially all assets of one, or subdividing an organization, or merging organizations. If propagation of a covered work results from an entity transaction, each party to that transaction who receives a copy of the work also receives whatever licenses to the work the party's predecessor in interest had or could give under the previous paragraph, plus a right to possession of the Corresponding Source of the work from the predecessor in interest, if the predecessor has it or can get it with reasonable efforts.

You may not impose any further restrictions on the exercise of the rights granted or affirmed under this License. For example, you may not impose a license fee, royalty, or other charge for exercise of rights granted under this License, and you may not initiate litigation (including a cross-claim or counterclaim in a lawsuit) alleging that any patent claim is infringed by making, using, selling, offering for sale, or importing the Program or any portion of it.

11. Patents.

A "contributor" is a copyright holder who authorizes use under this License of the Program or a work on which the Program is based. The work thus licensed is called the contributor's "contributor version".

A contributor's "essential patent claims" are all patent claims owned or controlled by the contributor, whether already acquired or hereafter acquired, that would be infringed by some manner, permitted by this License, of making, using, or selling its contributor version, but do not include claims that would be infringed only as a consequence of further modification of the contributor version. For purposes of this definition, "control" includes

the right to grant patent sublicenses in a manner consistent with the requirements of this License.

Each contributor grants you a non-exclusive, worldwide, royalty-free patent license under the contributor's essential patent claims, to make, use, sell, offer for sale, import and otherwise run, modify and propagate the contents of its contributor version.

In the following three paragraphs, a "patent license" is any express agreement or commitment, however denominated, not to enforce a patent (such as an express permission to practice a patent or covenant not to sue for patent infringement). To "grant" such a patent license to a party means to make such an agreement or commitment not to enforce a patent against the party.

If you convey a covered work, knowingly relying on a patent license, and the Corresponding Source of the work is not available for anyone to copy, free of charge and under the terms of this License, through a publicly available network server or other readily accessible means, then you must either (1) cause the Corresponding Source to be so available, or (2) arrange to deprive yourself of the benefit of the patent license for this particular work, or (3) arrange, in a manner consistent with the requirements of this License, to extend the patent license to downstream recipients. "Knowingly relying" means you have actual knowledge that, but for the patent license, your conveying the covered work in a country, or your recipient's use of the covered work in a country, would infringe one or more identifiable patents in that country that you have reason to believe are valid.

If, pursuant to or in connection with a single transaction or arrangement, you convey, or propagate by procuring conveyance of, a covered work, and grant a patent license to some of the parties receiving the covered work authorizing them to use, propagate, modify or convey a specific copy of the covered work, then the patent license you grant is automatically extended to all recipients of the covered work and works based on it.

A patent license is "discriminatory" if it does not include within the scope of its coverage, prohibits the exercise of, or is conditioned on the non-exercise of one or more of the rights that are specifically granted under this License. You may not convey a covered work if you are a party to an arrangement with a third party that is in the business of distributing software, under which you make payment to the third party based on the extent of your activity of conveying the work, and under which the third party grants, to any of the parties who would receive the covered work from you, a discriminatory patent license (a) in connection with copies of the covered work conveyed by you (or copies made from those

copies), or (b) primarily for and in connection with specific products or compilations that contain the covered work, unless you entered into that arrangement, or that patent license was granted, prior to 28 March 2007.

Nothing in this License shall be construed as excluding or limiting any implied license or other defenses to infringement that may otherwise be available to you under applicable patent law.

12. No Surrender of Others' Freedom.

If conditions are imposed on you (whether by court order, agreement or otherwise) that contradict the conditions of this License, they do not excuse you from the conditions of this License. If you cannot convey a covered work so as to satisfy simultaneously your obligations under this License and any other pertinent obligations, then as a consequence you may not convey it at all. For example, if you agree to terms that obligate you to collect a royalty for further conveying from those to whom you convey the Program, the only way you could satisfy both those terms and this License would be to refrain entirely from conveying the Program.

13. Use with the GNU Affero General Public License.

Notwithstanding any other provision of this License, you have permission to link or combine any covered work with a work licensed under version 3 of the GNU Affero General Public License into a single combined work, and to convey the resulting work. The terms of this License will continue to apply to the part which is the covered work, but the special requirements of the GNU Affero General Public License, section 13, concerning interaction through a network will apply to the combination as such.

14. Revised Versions of this License.

The Free Software Foundation may publish revised and/or new versions of the GNU General Public License from time to time. Such new versions will be similar in spirit to the present version, but may differ in detail to address new problems or concerns.

Each version is given a distinguishing version number. If the Program specifies that a certain numbered version of the GNU General Public License "or any later version" applies to it, you have the option of following the terms and conditions either of that numbered version or of any later version published by the Free Software Foundation. If the Program does not specify a version number of the GNU General Public License, you may choose any version ever published by the Free Software Foundation.

If the Program specifies that a proxy can decide which future versions of the GNU General Public License can be used, that proxy's public statement of acceptance of a version permanently authorizes you to choose that version for the Program.

Later license versions may give you additional or different permissions. However, no additional obligations are imposed on any author or copyright holder as a result of your choosing to follow a later version.

15. Disclaimer of Warranty.

THERE IS NO WARRANTY FOR THE PROGRAM, TO THE EXTENT PERMITTED BY APPLICABLE LAW. EXCEPT WHEN OTHERWISE STATED IN WRITING THE COPYRIGHT HOLDERS AND/OR OTHER PARTIES PROVIDE THE PROGRAM "AS IS" WITHOUT WARRANTY OF ANY KIND, EITHER EXPRESSED OR IMPLIED, INCLUDING, BUT NOT LIMITED TO, THE IMPLIED WARRANTIES OF MERCHANTABILITY AND FITNESS FOR A PARTICULAR PURPOSE. THE ENTIRE RISK AS TO THE QUALITY AND PERFORMANCE OF THE PROGRAM IS WITH YOU. SHOULD THE PROGRAM PROVE DEFECTIVE, YOU ASSUME THE COST OF ALL NECESSARY SERVICING, REPAIR OR CORRECTION.

16. Limitation of Liability.

IN NO EVENT UNLESS REQUIRED BY APPLICABLE LAW OR AGREED TO IN WRITING WILL ANY COPYRIGHT HOLDER, OR ANY OTHER PARTY WHO MODIFIES AND/OR CONVEYS THE PROGRAM AS PERMITTED ABOVE, BE LIABLE TO YOU FOR DAMAGES, INCLUDING ANY GENERAL, SPECIAL, INCIDENTAL OR CONSEQUENTIAL DAMAGES ARISING OUT OF THE USE OR INABILITY TO USE THE PROGRAM (INCLUDING BUT NOT LIMITED TO LOSS OF DATA OR DATA BEING RENDERED INACCURATE OR LOSSES SUSTAINED BY YOU OR THIRD PARTIES OR A FAILURE OF THE PROGRAM TO OPERATE WITH ANY OTHER PROGRAMS), EVEN IF SUCH HOLDER OR OTHER PARTY HAS BEEN ADVISED OF THE POSSIBILITY OF SUCH DAMAGES.

17. Interpretation of Sections 15 and 16.

If the disclaimer of warranty and limitation of liability provided above cannot be given local legal effect according to their terms, reviewing courts shall apply local law that most closely approximates an absolute waiver of all civil liability in connection with the Program, unless a warranty or assumption of liability accompanies a copy of the Program in return for a fee.

END OF TERMS AND CONDITIONS